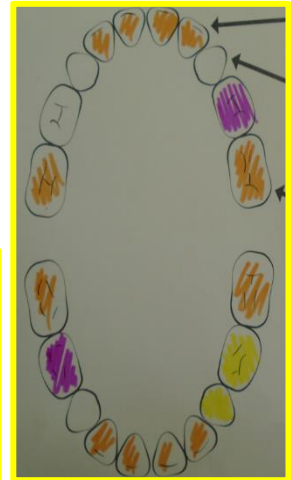


Welcome to this week's newsletter, which has been produced by Year 4. They all worked hard in groups to decide what they wanted to include in their newsletter and then spent time writing up their ideas.

Science

In science, we've been learning all about our teeth. We have been looking at the different teeth we have and their functions. We have also investigated what happens to our teeth when we have lots of sugar. We did this by putting eggs in different liquids (water, vinegar, orange juice, sugar free squash and cola) and observing closely to see what happened over a week. We found that the vinegar completely dissolved the shell, the orange juice made the shell crumbly and water had no effect to the egg. We've set this experiment up again, this time to see how toothpaste works.

We also used disclosing tablets to see how clean our teeth are. We had to chew it and new plaque turned red and old plaque turned blue. This helped us see which of our teeth we need to brush more!



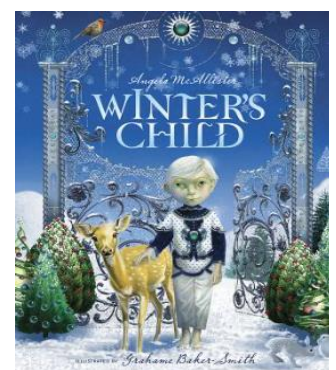
History

In history we're learning about Anglo-Saxons and how easy it was for them to settle in Britain. We've learnt that they were a mix of Germanic tribes that invaded Britain when the Romans left.

We have also looked at how they constructed their houses and had a go at making our own wattle and daub. Wattle is sticks and daub is a mixture of straw and manure. Luckily, Miss Grafton couldn't find any manure so we used clay instead!

English

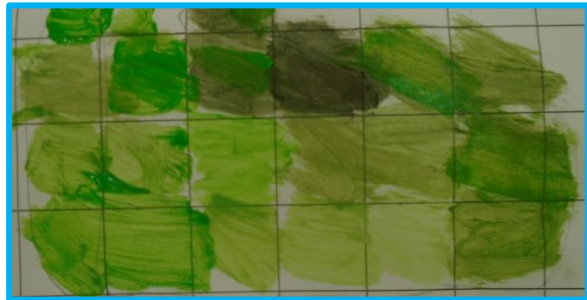
Our book in English is 'Winter's Child'. We have been looking at snowy scenes and using powerful vocabulary to describe them. We've also linked this to our reading skills and have been making inferences and predictions about what we think will happen in the story.



Art

In art we've been learning about shades and tints. To make a tint, you add white to a colour and to make a shade you add black. We made shade charts using a starting colour and added black and white to create shades and tints of that colour.

Last week we used this skill to help us paint highlights and shadows. We used a grid to help us look closely at the different colours and where the light and shadows were.



Music

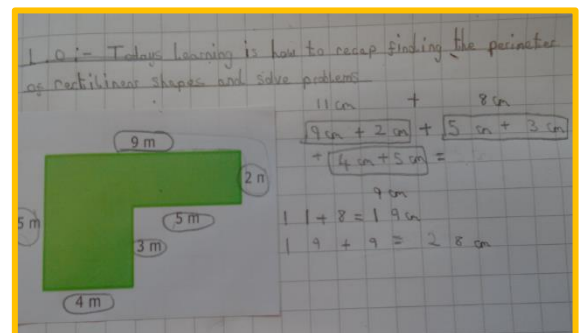
On Friday mornings, Mrs Salt and Mrs Chambers come into school to help us with music. We've been learning to play the Bamboo Tamboo, which are a type of drum that you beat with a stick and hit on the ground. We are split into groups: yellow, red and blue. Each group has a different pattern to play- we need to concentrate as it can get very confusing (and very loud!)

We're linking our music to other lessons and Mrs Salt is creating pieces for us to play that link to history.

Maths

We've been learning about perimeter and length. We know that there are 1,000m in a km and have been converting between the two units of measure. We have also been finding the perimeter of rectilinear shapes and polygons.

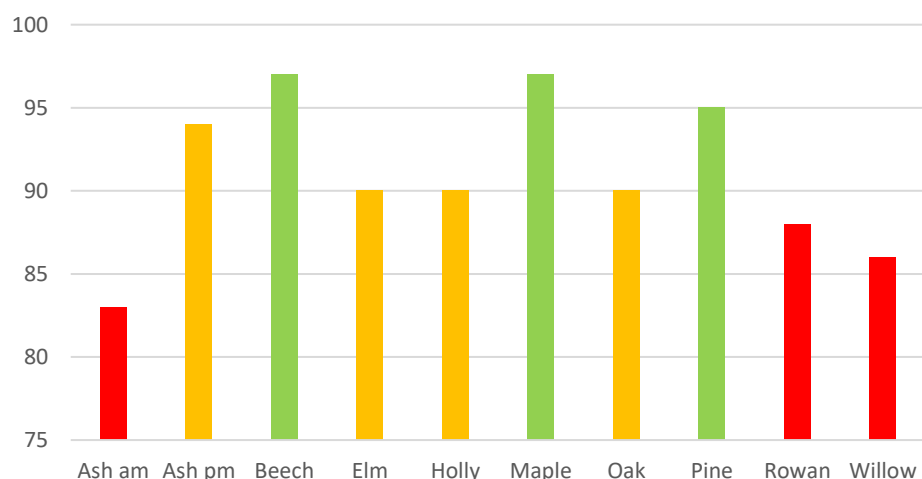
We've also been doing some active maths in the hall.



Lunch Menu: Week 3		
	Main course (2 choices)	Dessert
Monday	INSET DAY. School closed	
Tuesday	Turkey with Yorkshire pudding & gravy or cheese flan Creamed potatoes, seasonal vegetables	Sprinkle cake
Wednesday	Beef burger or veggie burger in a bun Potato puffs, baked beans & peas	Fresh fruit with bitesize flapjack
Thursday	Beef lasagne or Mediterranean Quorn fillet with sunshine rice Homemade bread, seasonal vegetables	Shortbread slice
Friday	Salmon fishcake or Margherita pizza Chips, seasonal vegetables	Chocolate & pear cake with chocolate custard
Salad bar and fruit available every day		
Sandwiches and baked potatoes can be ordered the day before via the school office.		

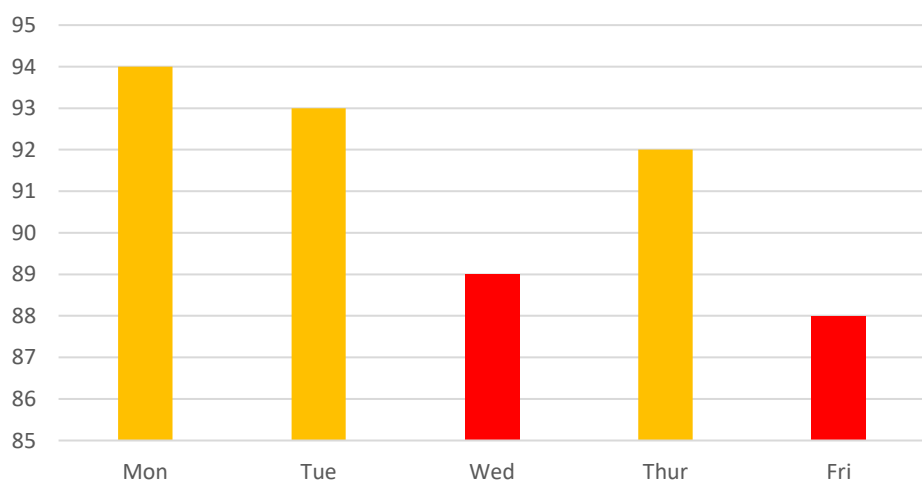
Diary Dates	
Date	Event
Mondays	Cricket Y1, Y2, Y5, Y6 Please make sure you have your PE kit
Fridays	Y4 Music percussion
19.1.23	Y6 Swimming restarts
30 Jan	INSET Day School closed to all pupils
1 Feb	NEU strike. School closed to Reception, Y1, 3, and 4 pupils.
20-24 Feb	Half term
27 Feb	INSET Day
2 Mar	World Book Day
30 Mar	Disco
3-14 Apr	Easter Holidays
29 May- 2 June	Half term
5 June	INSET Day
21 July 2023	Final day of school year

91% average attendance this week



Well done to Beech (SW Reception), Maple (Y2) and Pine (Y4) for good attendance this week.

Attendance %



Attendance has been below the expectation of 96% every day this week. Please ensure your child attends every day.

Attendance

We are encouraging everyone to arrive on time. If your child has a medical appointment, please ensure they attend school at the beginning of the morning or afternoon session (1pm) in order to get their mark for that half day.

Amendments to the attendance policy can be read in full on the website: [New Bolsover Primary School - Policies](#)

Safeguarding

Our safeguarding policy is updated annually and is located on the website for you to read the most up-to-date version:

[New Bolsover Primary School - Policies](#)

Reminder!

Please remember that Monday 30th January is an INSET day. School is closed to all pupils. School is also closed to pupils in Reception, Year 1, 3 and 4 on Wednesday 1st February because of the strike by NEU members. This will not impact your child's attendance figures.

World Book Day

World Book Day is on Thursday 2nd March. We would like to invite pupils to dress up as a character from a book they know well. We would like them to bring the book to school with them on the day. There will be small prizes for the most imaginative costumes.

Dressing up is optional, as we know that not all pupils like to dress up. We would still like them to bring their book with them.

Disco

On Thursday 30th March we will be holding a disco after school for pupils from Reception to Year 6 who:

- Complete their homework
- Read regularly at home
- Have attendance of at least 96% for this term. There are just over 50 school days this term, which means each day is worth 2%. Pupils eligible to attend would need to have had no more than 2 days off this term.
- Behave positively in school and are making good progress as a result.

Teachers will be holding meetings with parents of pupils who are not meeting these expectations to discuss next steps.

Contact Details

Please keep your contact details up to date with school. This includes, address, phone numbers, email address.

Thank you

Lunchtime Raffle

Well done to these children for winning this week's lunchtime raffle:

Mila (R), Minnie (Y1), McKenzie (Y2), Lydia (Y3), Berly (Y4), Amelia (Y5), Blake (Y6)