



Be The Best You Can Be

Weekly Newsletter

New Bolsover Primary
School

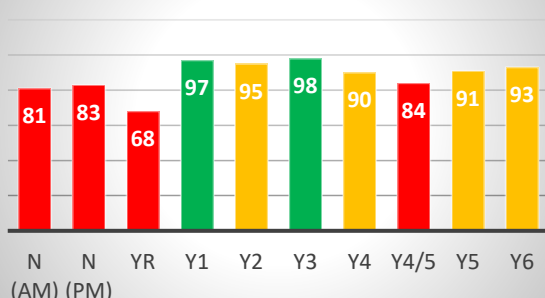
01.10.21

Welcome to this week's digital newsletter. As the weather is quite changeable now, please ensure your child brings a suitable coat for the forecast weather. Ventilation in school is important and windows are kept open. It is important your child has a navy blue jumper or cardigan to wear inside (no hoodies please).

Attendance

Pupil attendance is expected to be at least 96% across the year. Whole school attendance was very poor this week, except in Year 1 and Year 3.

Attendance this week 89.7%



Reading

Practising reading regularly at home is very important. We hope you have had time to read the Phonics and Reading guide for parents which was sent to you last week. Thank you for supporting your child with this. The guidance is also available on the website:

[14930498 \(amazonaws.com\)](https://www.amazonaws.com)

Online Safety

[Family Video Game Database - Guides, Ratings and Suggestions - Family Video Game Database \(taminggaming.com\)](#) Helps you find games that are suitable for the age of your child. You can put in a game, eg. Grand Theft Auto and it will come up with other similar games that are more age appropriate.

If your child uses You Tube, please see this useful family guide:

[345588e42040fc645f918abdb232e1e180335809f2bbeaa14c32525251779d002124f3f81e99e38d102e8ed0c5b1fbc94e5b0ffc45fd1be1acfea775b9d665e0 \(googleusercontent.com\)](https://www.googleusercontent.com)

More online safety resources can be found on the website:

[New Bolsover Primary School - Online Safety](#)

School Lunch Menu

| | |
|-----------|---|
| Monday | Sweet pepper & tomato pasta bake, sweetcorn, green beans Cookie |
| Tuesday | Harvest Festival Lunch Harvest Pie chicken or quorn, seasonal vegetables, creamed potatoes. Sticky toffee apple cake & custard |
| Wednesday | Beef burger in a bun, diced potatoes, coleslaw, peas Flapjack |
| Thursday | World Food Day Lunch Australia - chicken or quorn fillet with bbq sauce, fries, cheesy bread damper followed by lamingtons |
| Friday | Fish finger sandwich, chips, baked beans, peas Fruit muffin |

Yoghurt and fresh fruit served daily. Homemade bread served at least twice a week.

Diary Dates

| Date | Event |
|-------------|--|
| 5.10.21 | Harvest Festival lunch |
| 7.10.21 | Flu immunisation Reception-Y6 |
| 7.10.21 | World Food Day Lunch |
| 7.10.21 | National Poetry Day |
| 15.10.21 | Year 3 visit Ravenstor |
| 25-29.10.21 | Half term |
| 31.10.21 | Secondary School Application Deadline |
| 1.11.21 | INSET DAY |
| 16.11.21 | Lantern Making Y3 |
| 19.11.21 | Children in Need Day Wear something sporty £1 |
| 21.12.21 | Christmas Dinner |
| 23.12.21 | Final Day of term |
| 10.1.22 | First day of spring term |

Whole school poem

Thank you to everyone who has been practising the poem and learning it off by heart. Here are some more of the contributions to the display board in the hall.



NEW POEM TO LEARN

The Animal Fair

We went to the animal fair,
The birds and the beasts were there,
The big baboon by the light of the moon
Was combing his golden hair.
The monkey fell out of his bunk,
And slid down the elephant's trunk,
The elephant sneezed - Achoo!
And fell on her knees,
And what became of the monkey,
Monkey, monkey, monkey, monkey?

The Animal Fair

Can you produce some work at home to put on our Animal Fair poem display in the hall? You could draw the animals in the poem or another animal, draw or write your own 'Animal Fair' with different animals.

National Poetry Day

National Poetry Day takes place on Thursday 7th October. Do you have a favourite poem? Read some together, write your own, or log onto Purple Mash and explore the poems available together:

[Purple Mash by 2Simple](https://www.purplemash.com)

[The Seaside \(purplemash.com\)](https://www.purplemash.com)

[Zibdab the Groom \(purplemash.com\)](https://www.purplemash.com)