



Be The Best You Can Be

Weekly Newsletter

New Bolsover Primary
School

16.07.21

Welcome to this week's digital newsletter. It has been lovely to hold our Year 6 exhibition in school this week, with pupils sharing their proud learning achievements with their parents. Thank you to everyone who visited.

Pupils in school have had the opportunity to meet their new teacher and learning support teachers this week, including new pupils who will be joining our Nursery and Reception classes in September. Everyone has demonstrated resilience and a positive attitude. You should have received a booklet of useful information to reference for September, and the children will be bringing home some tasks to do as part of our 'Above and Beyond' summer project. End of year pupil reports are also being emailed out today.

Warm, sunny weather is forecast up to the end of term, so please ensure your child is wearing suncream and remembers to bring a hat and water bottle next week. Enjoy the good weather this weekend.

Attendance

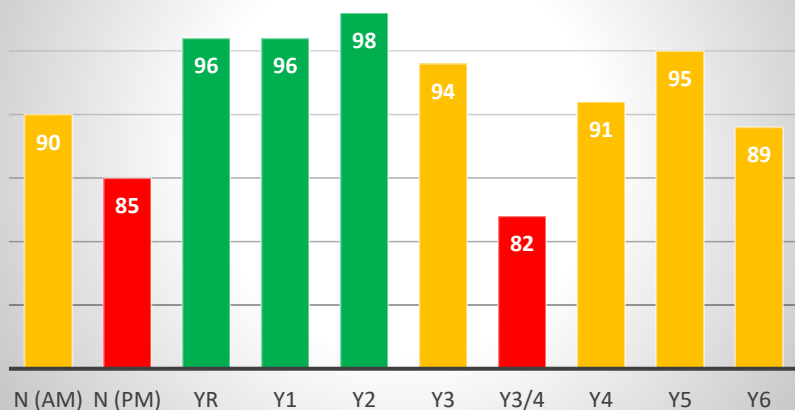
Pupil attendance is expected to be at least 96% across the year.

Whole school attendance this week was 92.6%

	Mon	Tue	Wed	Thur	Fri
%	89	93.2	93.2	93.7	94
No. Lates	5	10	5	2	0

Punctuality was excellent on Friday. Well done to Reception, Year 1 and Year 2 for good attendance this week.

Attendance this week %



National Pupil Attendance Information

The national average for primary school attendance on 8 July was 85.1%, compared to 92.2% at NBP. Well done again for being more than 7% above the national average!

School Lunch Menu

Monday	Sweet pepper & tomato pasta bake, sweetcorn, green beans Cookie
Tuesday	Roast turkey, stuffing, potatoes, cauliflower, carrots, gravy Fresh fruit platter, Greek and fruit yoghurt
Wednesday	End of term party lunch

Yoghurt and fresh fruit served daily. Homemade bread served at least twice a week.

Diary Dates

Date	Event
16 July	Annual reports emailed to parents & carers
19 July	Y6 Bolsover School Induction Pupils go directly to The Bolsover School
21 July	Final day for pupils

Date	Event
2 September	New school year begins

2021-22 INSET DAYS

Monday 1 November 2021
Monday 7 February 2022
Friday 27 May 2022
Thursday 21 Friday 22 July 2022