



Be The Best You Can Be

Weekly Newsletter

New Bolsover Primary
School

09.07.21

Welcome to this week's digital newsletter. Some year groups have enjoyed visits beyond school in the last couple of weeks. There are a few photographs to show what they did on page 2. It was lovely to be able to take the children on these trips and they all had a great time.

Please ensure children bring a rainproof coat as the weather has been changeable lately and pupils will be continuing with lots of outdoor learning up until the end of term.

School Uniform

We have been tolerant about uniform expectations this term as we know it has been difficult to get some items or replace ones that children have outgrown so close to the holidays, but from September, we will expect all pupils to wear uniform in the school colours.

Black, grey or navy blue trousers, skirt or pinafore dress (no leggings).

Sky blue polo shirt (not white).

Navy jumper, sweatshirt or cardigan (not hoodies).

Dark coloured flat shoes with grips.

School book bag- large bags should not be brought as there is not the room to store them.

Long hair must be tied back.

Stud earrings and a watch can be worn. No other jewellery.

Attendance

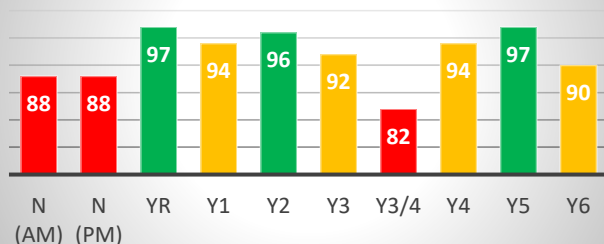
Pupil attendance is expected to be at least 96% across the year.

Whole school attendance this week was 92.7%

	Mon	Tue	Wed	Thur	Fri
%	96.3	93.1	91.4	92.2	90.1
No. Lates	1	0	5	4	3

Well done to Mr McDonnell's class for good attendance this week. Punctuality was better, especially at the start of the week.

Attendance this week %



National Pupil Attendance Information

The national average for primary school attendance on 1 July was 87.8%, compared to 93% at NBP. Well done again for being more than 5% above the national average.

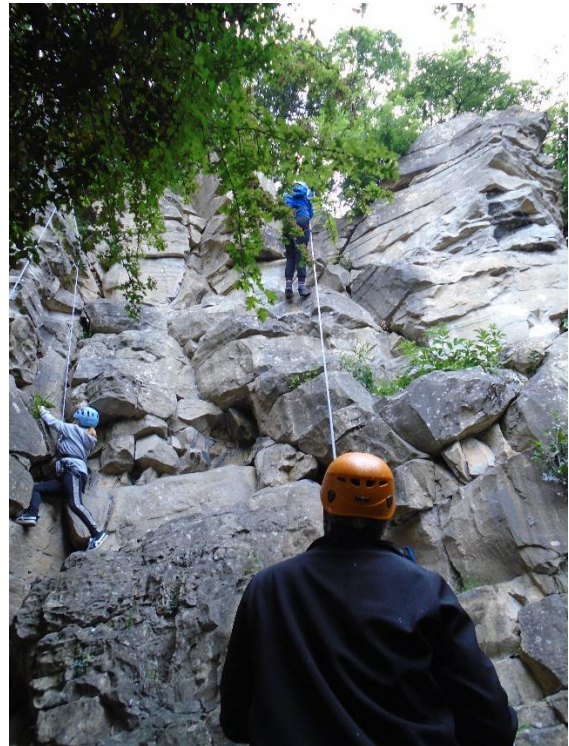
School Lunch Menu

Monday	Vegetarian sausage roll, potatoes, peas, carrots & gravy Chocolate orange muffin
Tuesday	Roast beef, Yorkshire pudding, potatoes, cauliflower, carrots, gravy Fresh fruit platter with Greek and fruit yoghurts
Wednesday	Beef bolognese pasta or lasagne, green beans, sweetcorn Crunchy biscuit
Thursday	Sausage Big Breakfast, potato wedges or hash browns, baked beans, peas Fruit jelly
Friday	Seaside Special Fish, chips & peas Ice cream

Yoghurt and fresh fruit served daily. Homemade bread served at least twice a week.

Diary Dates

Date	Event
13, 14 July	Y6 Leaver Exhibition
12-22 July	Y6 Shirebrook School Induction
15 July	Helen Parsons, Community Link Worker from 8.30am
16 July	Annual reports emailed to parents & carers
19 July	Y6 Bolsover School Induction
21 July	Final day for pupils



As part of their final adventure at primary school, Year 6 have spent the day at Pleasley Vale experiencing canoeing, bell boats, archery and climbing. They all had a great time!

On Monday, Year 3 and Year 4 went to Lea Green for the day to take part in a range of outdoor adventurous activities including climbing, problem solving and working together.



