



Be The Best You Can Be

Weekly Newsletter

New Bolsover Primary
School

02.07.21

Welcome to this week's digital newsletter. You will be aware that cases of Covid nationally are increasing which is affecting the operation of many schools across the country. Please continue to follow national guidance- if anyone in the household has symptoms they must get a test and all members of the household must isolate until a negative test result is confirmed. Remember the measures we have put in place on the school site:

- send pupils onto the site independently in the morning if possible (depending on age),
- ensure they bring a water bottle, reading book and record but nothing else (toys should not be brought to school),
- limit to one adult per family on site and maintain social distancing,
- wear a mask if you need to enter the main entrance to visit reception,
- request an appointment if you wish to speak to a member of staff.

Thank you to the parents who arrive early and ensure they supervise their children until the doors open, and for making sure children keep the main entrance and gateways clear.

So far, compared to some schools, the number of cases at school has been low. Thank you for your continued efforts to maintain safety for everyone.

Attendance

Pupil attendance is expected to be at least 96% across the year.

Whole school attendance this week was 91.3%

	Mon	Tue	Wed	Thur	Fri
%	91.7	92.3	89.5	92.8	89.4
No. Lates	7	4	7	5	3

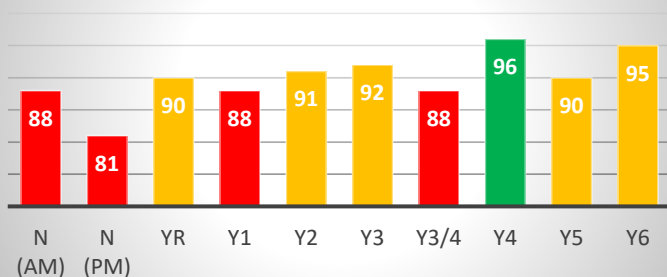
Well done to Mr McDonnell's class for good attendance this week.

School Lunch Menu

Monday	Quorn dipper deli wrap, pasta or potatoes, peas & carrots Oaty biscuit
Tuesday	Roast pork, apple sauce, potatoes, cabbage, carrots, gravy Vanilla ice cream & peaches
Wednesday	Beef meatballs in tomato sauce, pasta, broccoli, sweetcorn Banana cake
Thursday	Chicken curry, rice, naan bread, sweetcorn, broccoli Bitesize chocolate cracknel with fruit
Friday	Sweet potato fish cake, chips, baked beans, peas Strawberry mousse

Yoghurt and fresh fruit served daily. Homemade bread served at least twice a week.

Attendance this week %



National Pupil Attendance Information

Based on data from 24th June New Bolsover Primary School was **above the national average for attendance.**

National average primary school attendance = 90.9%

NBP average attendance = 93.8%

Diary Dates

Date	Event
5 July	Y3 & 4 Lea Green visit
9, 13, 14 July	Y6 Leaver Exhibition
12-22 July	Y6 Shirebrook School Induction
15 July	Helen Parsons, Community Link Worker from 8.30am
16 July	Annual reports emailed to parents & carers
19 July	Y6 Bolsover School Induction
20 July	Y6 Netherthorpe School Induction Cancelled
21 July	Final day for pupils

Community Champion Link Worker

A message from Helen Parsons

Have you been impacted by COVID-19?

Your Community Champion Link Worker is here to help you find support during these difficult times.

- Money worries due to COVID -19?
- Want to get more active and improve your health?
- Are you unsure where you can get support if you have to self isolate?
- Are struggling with your mental health?

Your Community Champion Link Worker is

Helen Parsons
Helen.Parsons1@bolsover.gov.uk
07866 075733

Drop in sessions at:

Courtyard Coffee Shop Mondays from 09:30 to 12:00.

Bainbridge Hall (Day to tbc) 09:00 to 10:00

Bolsover Contact Centre Tuesday 13:00 to 15:00

Bolsover Market Fridays 09:30 to 12:00

Helen will be outside school on the morning of Thursday 15th July to introduce herself.